



BUSH BLITZ SPECIES DISCOVERY PROGRAM



# Ledknapper Nature Reserve NSW Supplement

# Contents

Appendix A: Species Lists	3
Fauna	4
Vertebrates	4
Reptiles	4
Frogs and Toads	4
Invertebrates	5
Butterflies and Moths	5
Flies	5
Beetles	5
Moth Lacewings	5
Cicadas	5
True Bugs — Terrestrial	5
Grasshoppers	6
Damselflies and Dragonflies	6
Flora	7
Flowering Plants	7
Appendix C: Exotic and Pest Species	9
Fauna	10
Invertebrates	10
Butterflies and Moths	10
True Bugs — Terrestrial	10
Grasshoppers	10

# Key

- \* = New record for this reserve
- ^ = Exotic/Pest
- # = EPBC listed
- ~ = TSC (NSW) listed
- † = FMA (NSW) listed
- ‡ = NCA (Qld) listed

- EPBC = *Environment Protection and Biodiversity Conservation Act 1999* (Commonwealth)
- FMA = *Fisheries Management Act 1994* (New South Wales)
- NCA = *Nature Conservation Act 1992* (Queensland)
- TSC = *Threatened Species Conservation Act 1995* (New South Wales)

Colour coding for entries:

- Black** = Previously recorded on the reserve and found on this survey
- Brown** = **Putative new species**
- Blue** = Previously recorded on the reserve but not found on this survey





# Appendix A: Species Lists

Nomenclature and taxonomy used in this appendix are consistent with that from the Australian Faunal Directory (AFD), the Australian Plant Name Index (APNI) and the Australian Plant Census (APC).

Current at March 2014



# Fauna

## Vertebrates

Reptiles		
Family	Species	Common name
Agamidae	<i>Pogona vitticeps</i> *	Central Bearded Dragon
Gekkonidae	<i>Heteronotia binoei</i>	Bynoe's Gecko
Scincidae	<i>Lerista punctatovittata</i>	Eastern Robust Slider
	<i>Lerista timida</i>	Timid Slider

Frogs and Toads		
Family	Species	Common name
Hylidae	<i>Litoria rubella</i> *	Desert Tree Frog, Red Tree Frog





## Invertebrates

Butterflies and Moths	
Family	Species
Arctiidae	<i>Utetheisa lotrix</i> *
Cossidae	<i>Endoxyla amphiplecta</i> *
Geometridae	<i>Thalaina macfarlandi</i> *
Hepialidae	<i>Abantiades leucochiton</i> *
	<i>Trictena atripalpis</i> *
Lasiocampidae	<i>Entometa chlorosacca</i> *
	<i>Eremaea coralliphora</i> *
	<i>Eremaea zonospila</i> *
Lycaenidae	<i>Nacaduba biocellata</i> *
	<i>Zizeeria karsandra</i> *
	<i>Zizina otis labradus</i> *
Lymantriidae	<i>Acyphas semiochrea</i> *
Noctuidae	<i>Ophiusa disjungens</i> *
	<i>Ophiusa tirhaca</i> *
	<i>Pandesma submurina</i> *
Nymphalidae	<i>Danaus chrysippus</i> *
	<i>Hypolimnas bolina nerina</i>
Papilionidae	<i>Papilio demoleus</i> *
Pieridae	<i>Belenois java</i> *
	<i>Catopsilia pyranthe</i> *
	<i>Eurema smilax</i> *
Sphingidae	<i>Hippotion celerio</i> ^ *
	<i>Hippotion scrofa</i> *

Flies	
Family	Species
Apioceridae	<i>Apiocera</i> sp. *
Bombyliidae	<i>Wurda emu</i> *
	<i>Wurda nr windorah</i> *
	<i>Wurda windorah</i> *
Conopidae	<i>Australoconops uncinatus</i> *

Beetles	
Family	Species
Scarabaeidae	<i>Digitonthophagus gazella</i> *
	<i>Onitis alexis</i> *
	<b><i>Onthophagus n. sp. NSW1</i> *</b>
	<i>Onthophagus nr dandalu</i> *
	<i>Onthophagus subocelliger</i> *

Moth Lacewings	
Family	Species
Ithonidae	<i>Varnia implexa</i> *

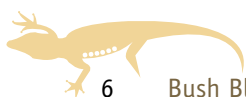
Cicadas	
Family	Species
Cicadidae	<b><i>Tamasa n. sp. BushBlitz</i> *</b>

True Bugs — Terrestrial	
Family	Species
Lygaeidae	<i>Nysius vinitor</i> ^ *
Pentatomidae	<i>Poecilometis punctiventris</i> *
Scutelleridae	<i>Morbora schoutedeni</i> *



Grasshoppers	
Family	Species
Acrididae	<i>Austracris guttulosa</i> ^ *
Pyrgomorphidae	<i>Monistria pustulifera</i> *

Damselflies and Dragonflies	
Family	Species
Aeshnidae	<i>Anax papuensis</i> *
Coenagrionidae	<i>Ischnura aurora</i> *
	<i>Xanthagrion erythroneurum</i> *
Corduliidae	<i>Hemicordulia tau</i> *
Lestidae	<i>Austrolestes aridus</i> *
Libellulidae	<i>Diplacodes bipunctata</i> *
	<i>Orthetrum caledonicum</i> *
	<i>Pantala flavescens</i> *





# Flora

Flowering Plants	
Family	Species
Asteraceae	<i>Epaltes cunninghamii</i> *
	<i>Minuria integerrima</i> *
Fabaceae	<i>Acacia brachybotrya</i> *
	<i>Acacia brachystachya</i> *
	<i>Acacia leiocalyx</i> *
	<i>Jacksonia rhadinoclona</i> *
	<i>Petalostylis labicheoides</i> *
Goodeniaceae	<i>Scaevola depauperata</i> *
Lamiaceae	<i>Dicrastylis lewellinii</i> *
	<i>Teucrium racemosum</i> *
Malvaceae	<i>Brachychiton populneus</i> *
	<i>Keraudrenia integrifolia</i> *
Myrtaceae	<i>Calytrix longiflora</i> *
	<i>Micromyrtus hexamera</i> *
Nitrariaceae	<i>Nitraria billardierei</i> *
Poaceae	<i>Amphipogon caricinus</i> *
	<i>Aristida latifolia</i> *
Portulacaceae	<i>Calandrinia balonensis</i> *
Proteaceae	<i>Grevillea juncifolia</i> subsp. <i>juncifolia</i> *
Rubiaceae	<i>Psyrdrax oleifolia</i> *
Sapindaceae	<i>Dodonaea boroniifolia</i> *



# Notes







## Appendix C: Exotic and Pest Species

Nomenclature and taxonomy used in this appendix are consistent with that from the Australian Faunal Directory (AFD), the Australian Plant Name Index (APNI) and the Australian Plant Census (APC).

Current at March 2014



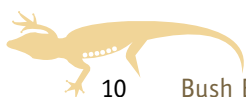
# Fauna

## Invertebrates

Butterflies and Moths		
Family	Species	Common name
Sphingidae	<i>Hippotion celerio</i> *	Grapevine Hawk Moth

True Bugs — Terrestrial		
Family	Species	Common name
Lygaeidae	<i>Nysius vinitor</i> *	Rutherglen Bug

Grasshoppers		
Family	Species	Common name
Acrididae	<i>Austracris guttulosa</i> *	Spur-throated Locust





© Copyright Commonwealth of Australia, 2014.



*Ledknapper Nature Reserve NSW 2009–2010. A Bush Blitz supplement* is licensed by the Commonwealth of Australia for use under a Creative Commons By Attribution 3.0 Australia licence with the exception of the Coat of Arms of the Commonwealth of Australia, the logo of the agency responsible for publishing the report, content supplied by third parties, and any images depicting people. For licence conditions see: <http://creativecommons.org/licenses/by/3.0/au/>

This report should be attributed as '*Ledknapper Nature Reserve NSW 2009–2010. A Bush Blitz supplement*, Commonwealth of Australia 2014'.

The Commonwealth of Australia has made all reasonable efforts to identify content supplied by third parties using the following formats '[name of creator] © Copyright, [name of copyright holder]' or '© Copyright, [name of copyright holder]'.

## Disclaimer

The views and opinions expressed in this publication are those of the authors and do not necessarily reflect those of the Australian Government or the Minister for the Environment.

While reasonable efforts have been made to ensure that the contents of this publication are factually correct, the Commonwealth does not accept responsibility for the accuracy or completeness of the contents, and shall not be liable for any loss or damage that may be occasioned directly or indirectly through the use of, or reliance on, the contents of this publication.

**PUBLISHER** ABRS, Canberra  
**EDITOR** ABRS  
**LAYOUT** Great Impressions  
**DESIGN TEMPLATE** ABRS  
**FRONT COVER** White-breasted Woodswallow (*Artamus leucorhynchus*), At A Glance Pty Ltd  
 © Copyright, Department of the Environment

## All publications are available online at:

[www.bushblitz.org.au](http://www.bushblitz.org.au)

This supplement contains the appendices from the Bush Blitz survey report:

- + North-western NSW and southern Qld 2009–2010 including Culgoa Floodplain, Culgoa, Gundabooka, Mount Grenfell (proposed), Paroo-Darling, Toorale National Parks; Gundabooka, Paroo-Darling, Toorale State Conservation Areas; Culgoa, Ginghet, Ledknapper, Quanda Nature Reserves; and Mount Grenfell Historic Site. ISBN 978 0 642 56880 9

Supplements available:

- + Culgoa Floodplain National Park Qld
- + Culgoa National Park and Culgoa Nature Reserve NSW
- + Gundabooka National Park and Gundabooka State Conservation Area NSW
- + Paroo-Darling National Park and Paroo-Darling State Conservation Area NSW
- + Toorale National Park and Toorale State Conservation Area NSW
- + Mount Grenfell Historic Site and proposed Mount Grenfell National Park NSW
- + Ginghet Nature Reserve NSW
- + Ledknapper Nature Reserve NSW
- + Quanda, Nombinnie and Nocoleche Nature Reserves NSW

## What is Bush Blitz?

Bush Blitz is a multi-million dollar partnership between the Australian Government, BHP Billiton and Earthwatch Australia to document plants and animals in selected properties across Australia's National Reserve System.

This innovative partnership harnesses the expertise of many of Australia's top scientists from museums, herbaria, universities, and other institutions and organisations across the country.



Bush Blitz survey report

North-western NSW and southern Qld + 2009–2010  
Ledknapper Nature Reserve NSW Supplement



Australian Government



Australian  
Biological  
Resources  
Study